

SOLD

Unit 901, 163 Fitzroy St, St Kilda



The Ultimate Penthouse Indulgence with Stunning City, Bay and Lake Views

Call Joe Doyle 0435 937 864 to arrange a private appointment.

A breathtaking blend of oversized outdoor indulgence and a magical 270 degree panorama sweeping across magnificent Melbourne, this stunning 2 bedroom, 2 bathroom penthouse apartment captures the irresistible essence of an exclusive St Kilda lifestyle.

Crowning the top floor of the celebrated Halo complex, discover a wonderful sense of occasion with a glass-fronted living and dining area directing natural northern light to every far-reaching corner. Spill outside to your very own wraparound terrace overlooking verdant Albert Park, the scintillating city skyline, and the blue-water beauty of Port Philip Bay and Albert Park Lake with the majesty of the Dandenong Ranges providing a stunning backdrop towards the east. Purpose-built for north-facing entertaining in large numbers, this game-changing space is where the home truly comes alive with the protected vistas instantly inspiring thoughts of Grand Prix weekend!

Enjoy a stone-finished kitchen with the full suite of integrated Miele

2 2 3

| | |
|---------------|-------------|
| Price | SOLD |
| Property Type | Residential |
| Property ID | 1751 |

Agent Details

Joe Doyle - 0435 937 864
Sarah Korbel - 0415 393 898

Office Details

Nick Johnstone Pty Ltd
248 Esplanade Brighton VIC
3186 Australia
9553 8300



appliances and an inviting island bench, ideal for preparation and presentation. Both mirror-robed bedrooms are substantial in size, while the light-filled main is graced with a fully tiled ensuite, direct terrace access, individual air conditioning, double roller blinds, and additional walk-in robes.

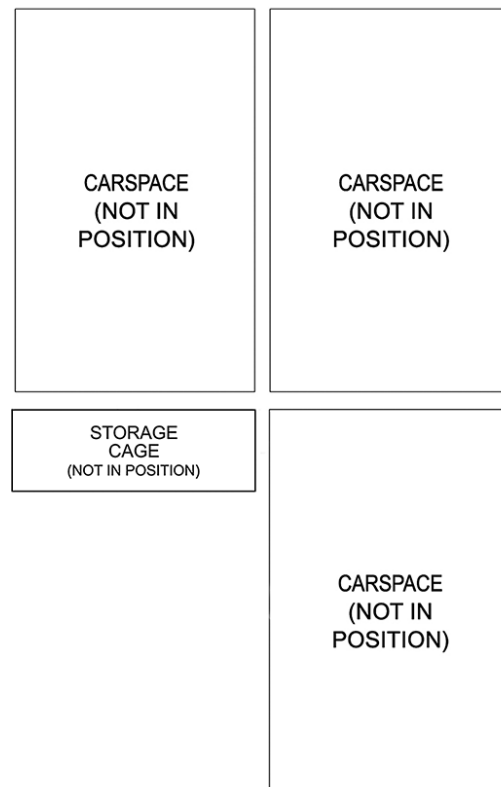
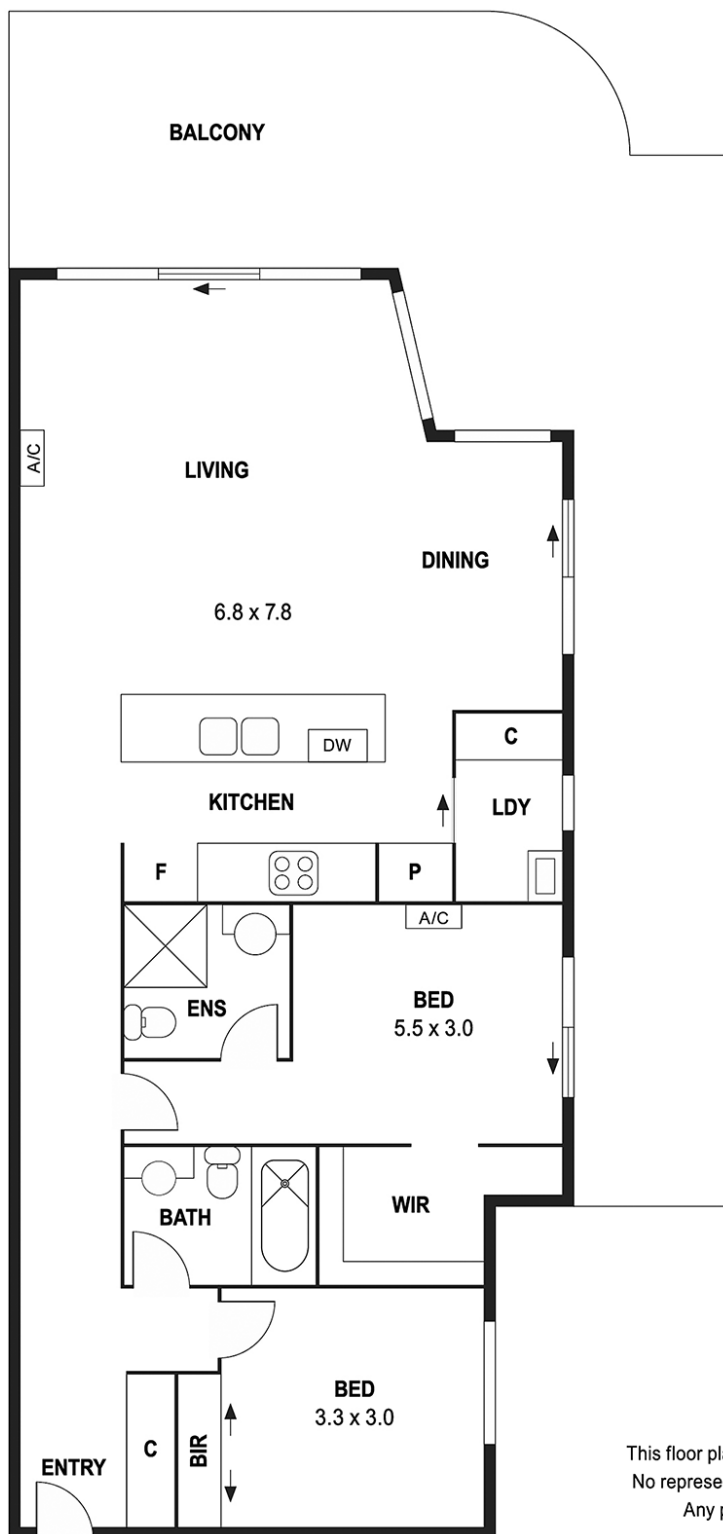
Freshly painted and carpeted with new remote-controlled blinds in the living space, this rare opportunity is further enhanced by a separate laundry with cabinetry, an inviting hallway entrance, heating/cooling, secure parking for three cars, basement storage, recessed down-lighting, video intercom entry, and lift access.

Positioned to perfection on the tree-lined Paris end of Fitzroy Street, venture downstairs and enjoy award-winning restaurants, lively bars and cafes, public transport choice, and acres of Albert Park greenery on your doorstep with St Kilda Beach a short stroll away. The first to view this sunlit sensation will fall in love!

At a glance...

- * 2 light-filled bedrooms with walk-in and/or mirrored built-in robes, main with private ensuite
- * Spacious open-plan living and dining
- * Stylish kitchen with integrated Miele appliances and a stone-topped island bench
- * Wraparound north-facing terrace with protected city, lake, bay and parkland views
- * Fully tiled principal bathroom with shower over bathtub
- * Separate laundry with cabinetry
- * Secure basement parking for 3 cars plus storage
- * Split-system heating and cooling
- * Freshly painted and carpeted with brand-new remote-controlled roller blinds
- * Recessed down-lighting
- * Video intercom entry plus lift access
- * Moments from the beach, restaurants, bars, cafes, Albert Park Lake, and transport to CBD

The above information provided has been furnished to us by the vendor/s. We have not verified whether or not that information is accurate and do not have any belief in one way or the other in its accuracy. We do not accept any responsibility to any person for its accuracy and do no more than pass it on. All interested parties should make and rely upon their own inquiries in order to determine whether or not this information is in fact accurate.



This floor plan is intended as a guide only. Layout dimension are approximate only.
No representations or warranties of any nature whatsoever are given or intended.
Any person using this information should rely on their own enquiries.