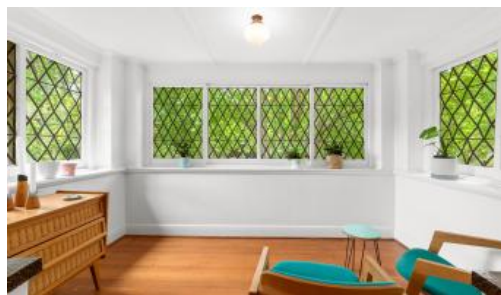


SOLD



Unit 3, 1 Goldsmith St, Elwood



Belmac: Deco Indulgence, Parkside Splendour!

Masterfully elevated with verdant views over neighbouring parkland, this elegant 3 bedroom retreat is a spectacular showcase of quintessential Art Deco style, status and substance. Matching period-perfect integrity with intuitive updates, prepare to fall in love with Belmac!

Set on the top floor in a grouping of four designed by prominent Shrine of Remembrance architect James Wardrop, each and every distinctive space offers elements of timeless detail, effortless authenticity and positive engagement. A spacious living room is graced with an elaborate domed ceiling truly breathtaking in its intricacy, further enhanced by delicate glass-fronted presentation cabinetry and a stylish pair of Deco sconces above the mantle of a working open fireplace.

The flexible floorplan places a premium on low-maintenance living without sacrificing space. Enjoy a versatile dining room flowing through to a stone-finished kitchen and meals area with high-quality Siemens appliances including an integrated dishwasher. Framed by singular lead-lighting and a lush park aspect almost inches from your face, an instantly relaxed sunroom or study will

3 1 1

Price	SOLD
Property Type	Residential
Property ID	1724

Agent Details

Nick Johnstone - 0414 276 871

Office Details

Nick Johnstone Pty Ltd
248 Esplanade Brighton VIC
3186 Australia
9553 8300



have you reaching for a book in seconds flat.

All three robed bedrooms highlight leafy outlooks with the third bedroom capable of working as a home office if desired, while a thoughtfully renovated bathroom boasts a rain-shower fitting and mirrored cabinetry. Comprehensive features include a concealed laundry, storage under stairs, triple-brick insulation, roller blinds, plantation shutters, a communal garden, and a lock-up single garage with loft storage and shelving plus additional driveway parking.

Alive with personality, exquisite Art Deco details include ornate ceiling and cornice artistry, original hardwood flooring, character-rich timber craftsmanship, towering ceilings, picture railings, terrazzo-tiled entrance, French glass doors, irresistible light fittings, and bold lead-lighting.

Located alongside one of Elwood's most picturesque tree-lined promenades, walk to Acland Street, Elwood Village, St Kilda Botanical Gardens and Port Phillip Bay. An inspection will prove to be a genuine treat!

At a glance...

* Belmac, circa 1934

* 3 large bedrooms with built-in robes and park aspects

* Chef-friendly Siemens kitchen/meals area with smooth stone surfaces

* Relaxed lounge room with open fireplace

* Versatile dining room

* Sunroom/home office

* Luxe bathroom with stylish walk-in shower

* Concealed laundry

* Storage under stairs

* Wide range of exemplary period features

* Roller blinds and plantation shutters

* Single lock-up garage with storage and driveway parking

* Delightful communal garden

* Moments from parkland, the beach, transport, shopping, restaurants, cafes and bars

* Designed by James Wardrop, famous for the Shrine and the Clifton Hill McDonald's

The above information provided has been furnished to us by the vendor/s. We have not verified whether or not that information is accurate and do not have any belief in one way or the other in its accuracy. We do not accept any responsibility to any person for its accuracy and do no more than pass it on. All interested parties should make and rely upon their own inquiries in order to determine whether or not this information is in fact accurate.

